

TH

3.6



CONSTRUCTION



LOGISTICS

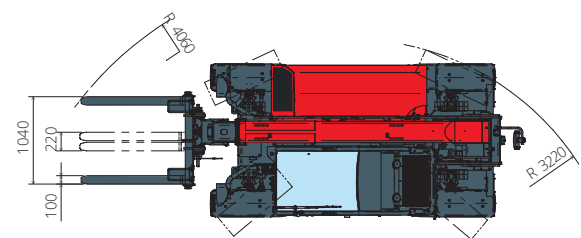
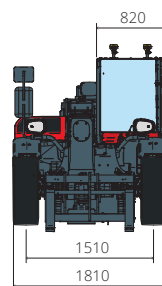
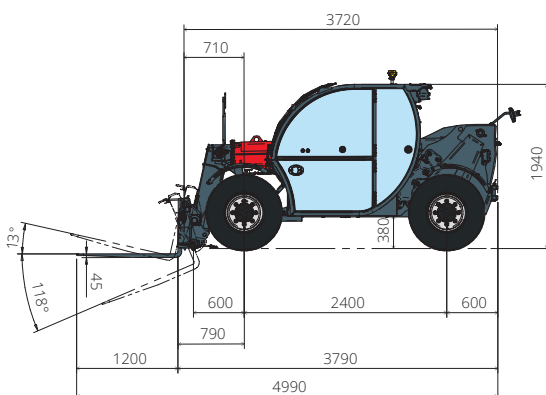
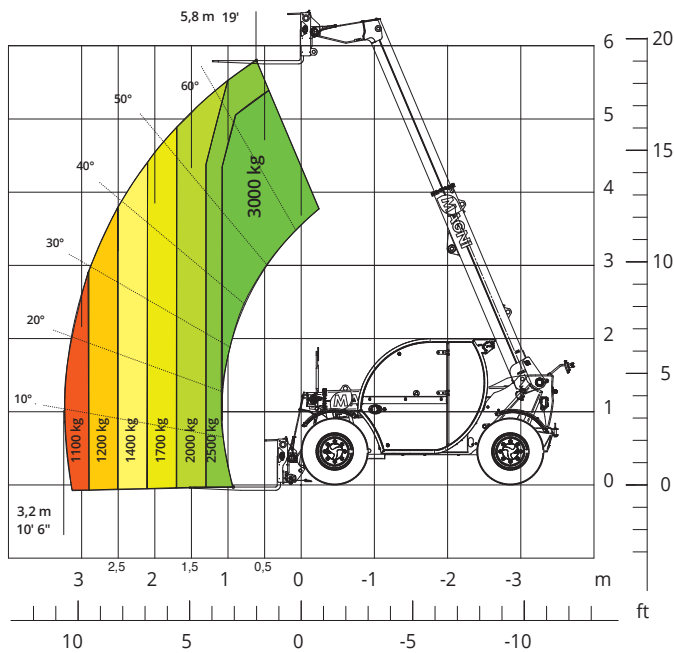


MINING



EVENTS
AND FILM

Load chart
on tyres



Machine model	Telescopic handler	TH 3.6	
	Maximum lifting capacity	3,000 kg	
	Maximum lifting height	5,80 m	
	Maximum reach	3,20 m	
Engine	Model	Deutz TCD 2,9 L4 Stage V	Deutz TCD 2,9 L4 EDG Stage IIIA
	Rated power	55,4 kW (75,3 hp) @ 2,200 rpm	
	Maximum torque	260 Nm @ 1,600 rpm	
	Displacement	2.900 cm ³	
	Cylinders	4 in line	
	Engine configuration	Diesel direct injection turbocharged	
	Cooling system	Water	
Transmission	Type	Hydrostatic	
	Maximum pressure	500 bar	
Axles and brakes	Type	Axles with planetary gearboxes	
	Front axle	Steering	
	Rear axle	Free oscillating	
	No. of steering wheels	4WS	
	Steering mode	Frontal/Concentric/Crab	
	Service brake	Wet multi-disk brakes on the front axle	
	Parking brake	Automatic	
	Tyres dimensions	300/75 R18	
Performance	Max. travel speed	35 km/h	
	Drawbar pull	43 kN	
	Maximum mass towable on hook	3,100 kg	
	Gradeability	28 %	
	Turning radius (end of forks)	3,300 mm	
Weights	Total unladen*	4,850 kg	
	Front axle unladen (boom retracted and lowered)*	2,000 kg	
	Rear axle unladen (boom retracted and lowered)*	2,850 kg	
Tank and system capacities	Fuel tank	63 l	
	AdBlue	-	
	Hydraulic oil tank	90 l	
	Engine oil tank	8 l	
	Cooling liquid	15 l	
Hydraulic circuit for movements	Circuit type	Dual flow gears	
	Service pump	-	
	Max. hydraulic flow rate	90 l/min	
	Max. boom head load capacity	75 l/m	
	Max. operating system pressure	260 bar	
	Controls for boom and turret movements	Electro-proportional valve	
	Movements control	1 joystick Danfoss with FNR switch and dead man safety device - Management with CAN bus technology	
Standard met	2006/42/EC: EU Machinery Directive		
	2016/1628: EU Regulation on the emissions of stage V engines		
	EN 1459-X: Relating to standards on the safety requirements for variable reach machines		
	EN 280/EN 280-1/EN 280-2: standards relating to mobile elevating work platforms (if available) ROPS/level 2 FOPS: relating to the standards for protective structures		

The data given in this brochure are provided for information purposes and are subject to change without prior notice.

All images are purely guideline and might not give an exact representation of the product.

*the stated weight refers to the vehicle unladen with standard equipment and may vary depending on the chosen configuration.