

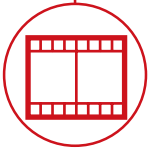
# RTH 13.26



CONSTRUCTION



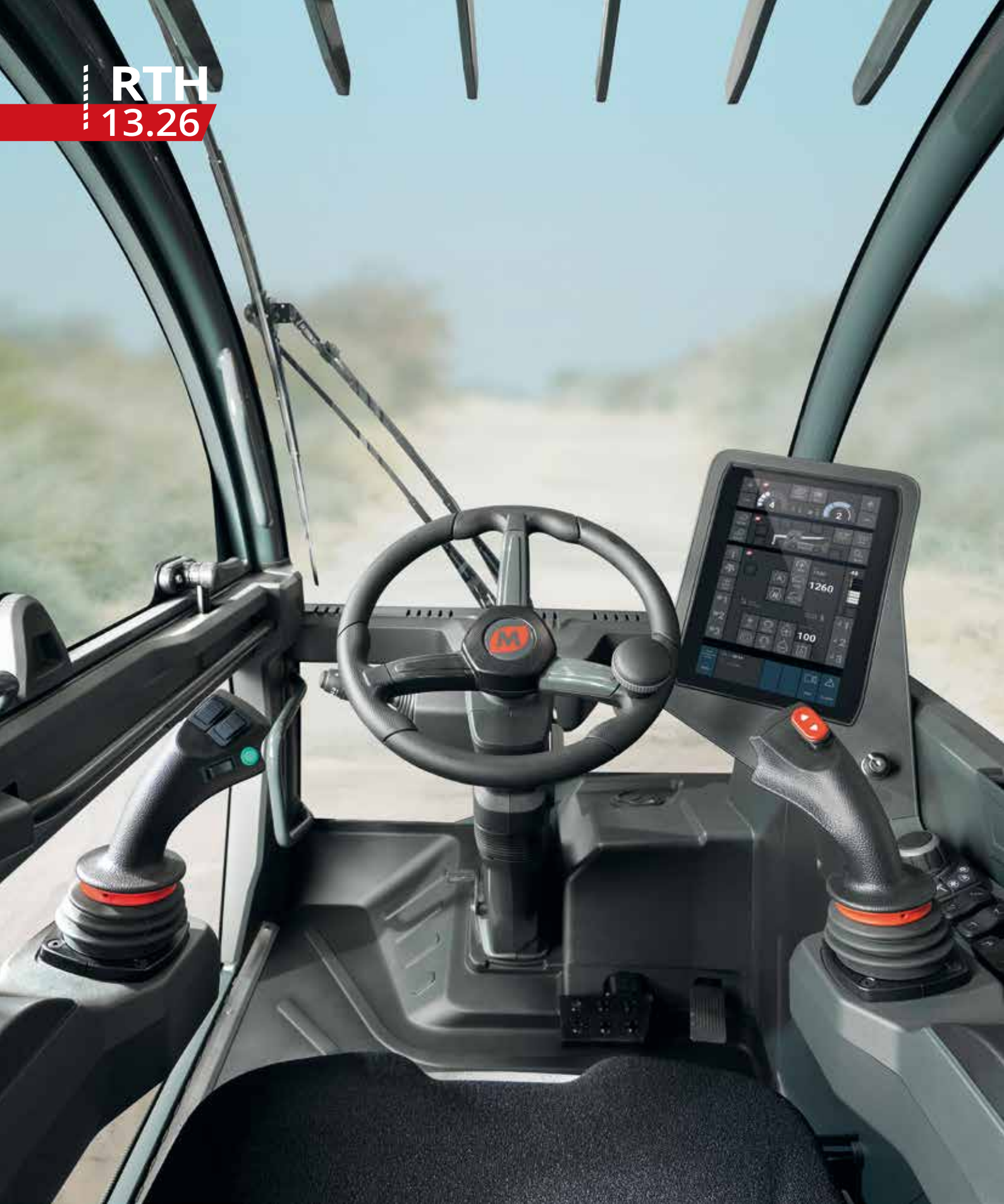
LOGISTICS



EVENTS AND  
FILM



**RTH**  
**13.26**



**CAB**

Best-in-class  
safety and visibility



**PERFORMANCE**

Unrivalled lifting  
performance

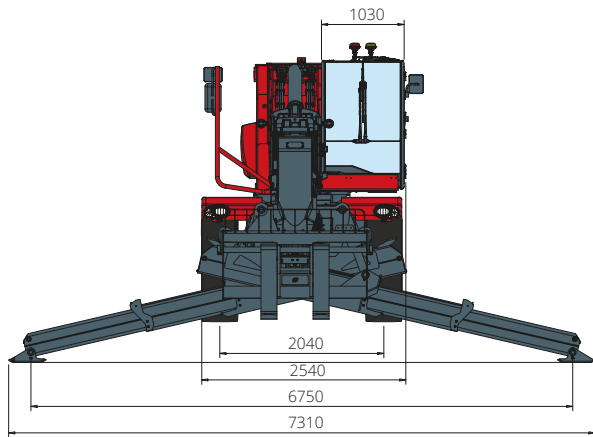


**LOAD LIVE DIAGRAM**

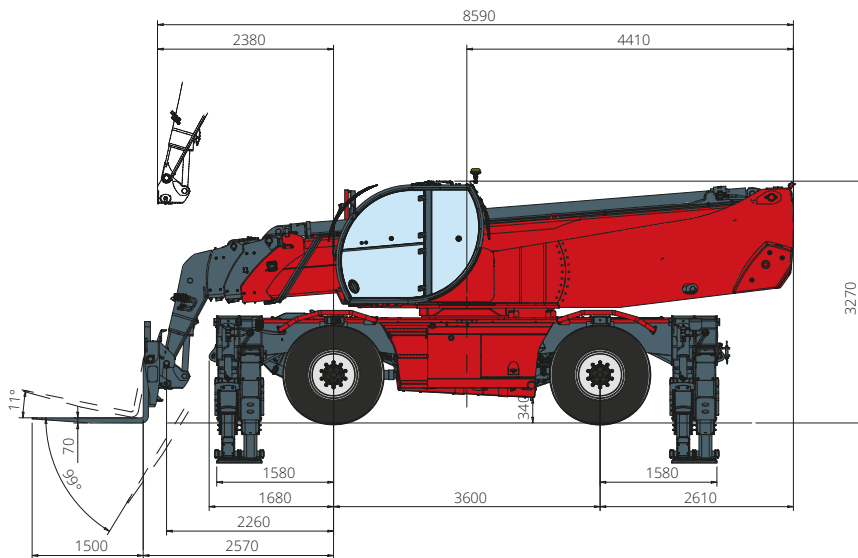
Three real-time dynamic  
load charts

# RTH 13.26

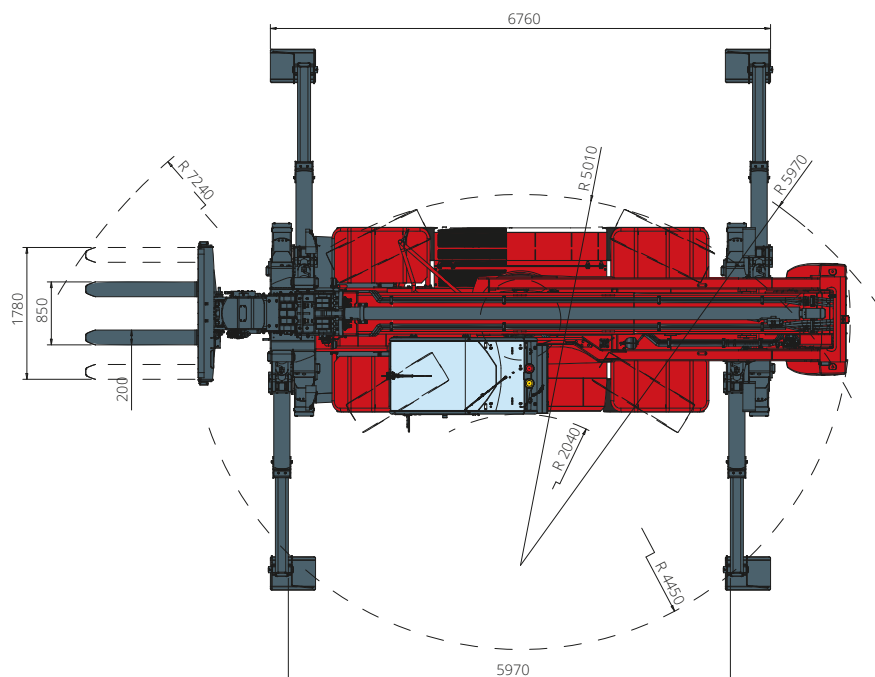
## DIMENSIONS (mm)



**FRONT**  
view



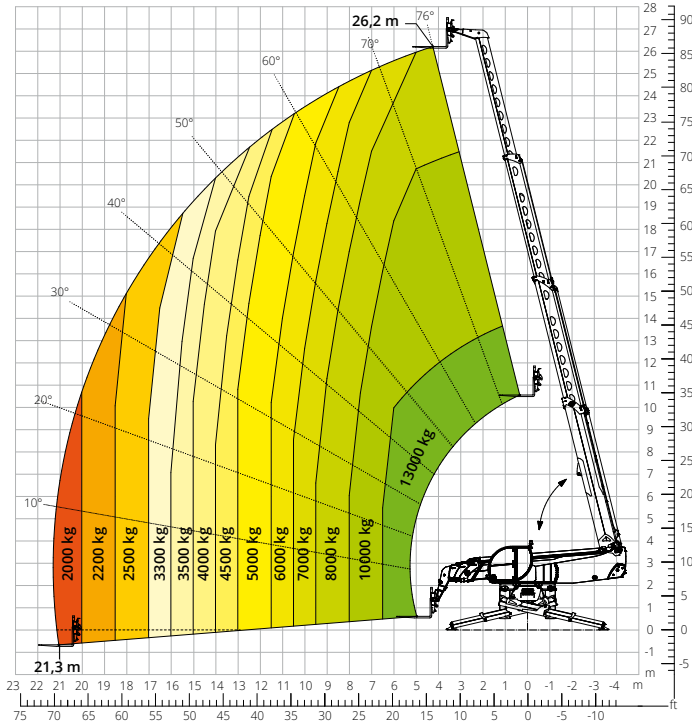
**SIDE**  
view



view

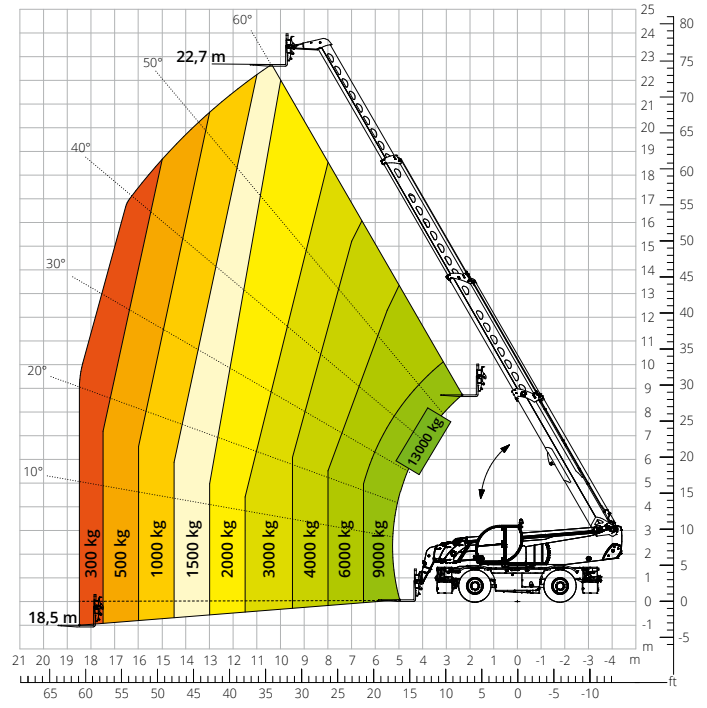
Load chart with  
**FULLY EXTENDED STABILISERS (360°)**

ATT - 03 - 021



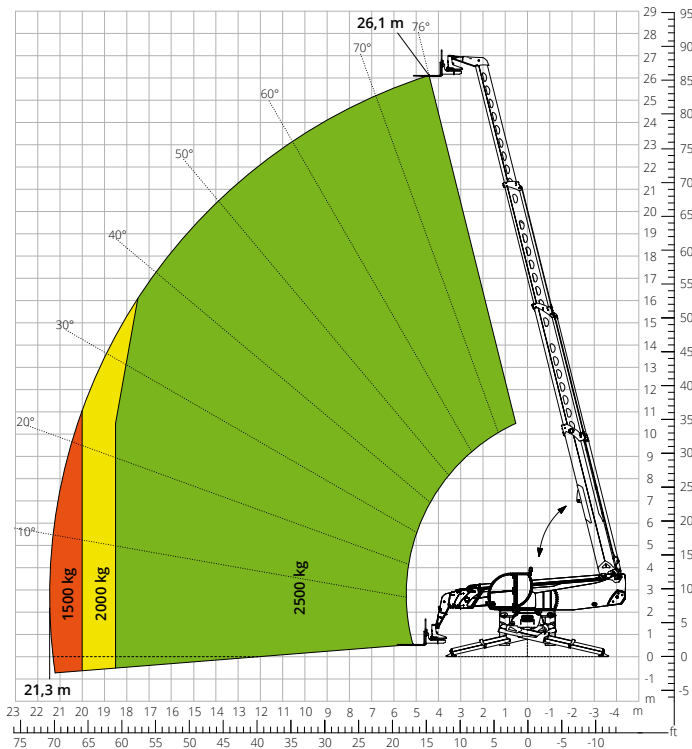
Load chart  
**FRONT ATTACHMENT ON TYRES**

ATT - 03 - 021



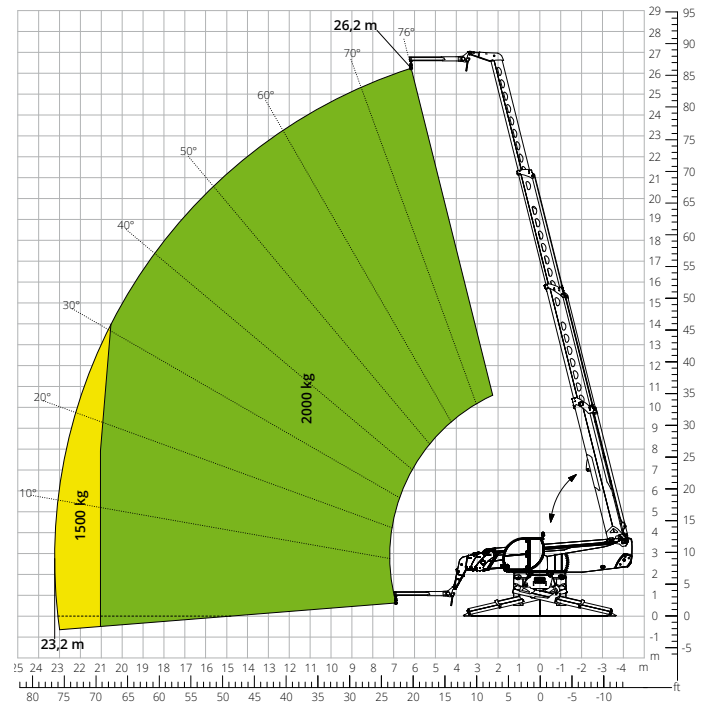
Load chart with  
**ROTATING FORKS, 5,000 kg**

ATT - 03 - 041



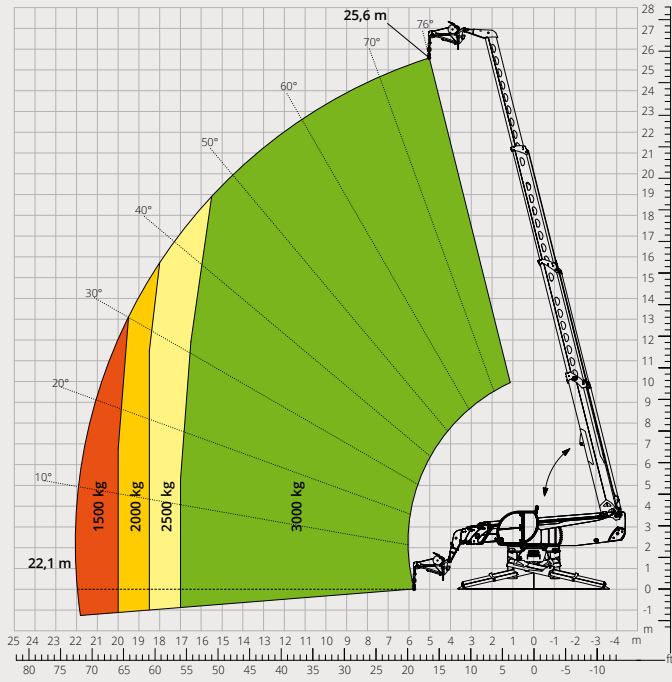
Load chart with  
**JIB 2,000 kg"**

ATT - 04 - 013

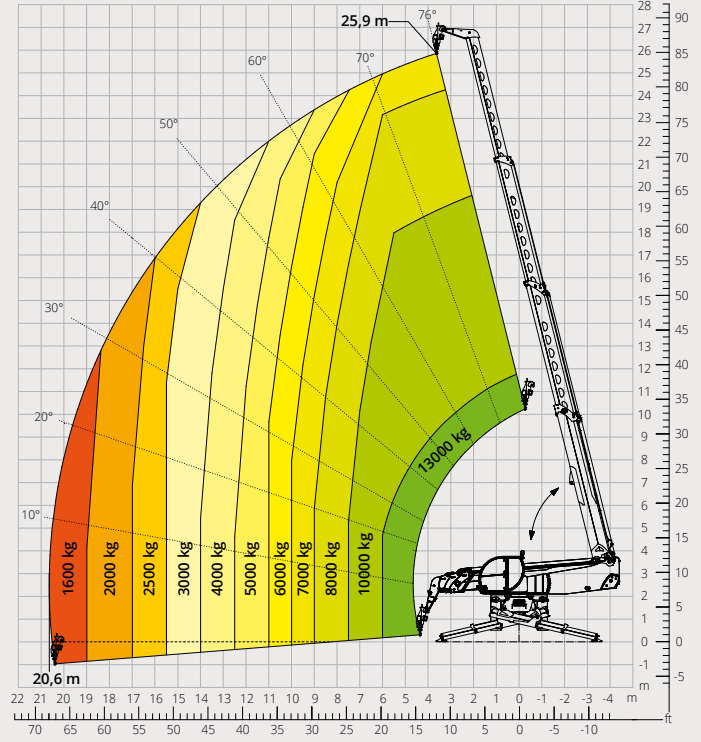




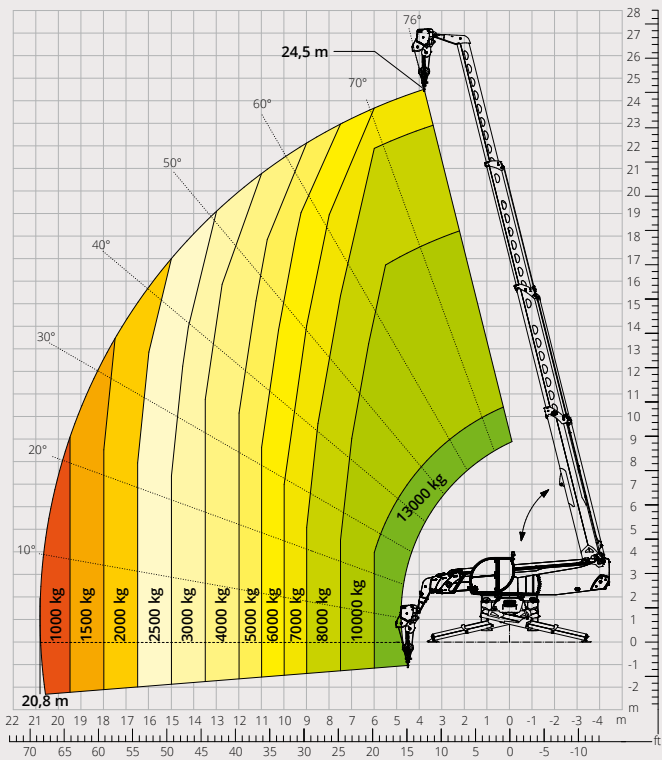
Load chart with  
**JIB WITH WINCH, 3,000 kg**  
ATT - 04 - 019



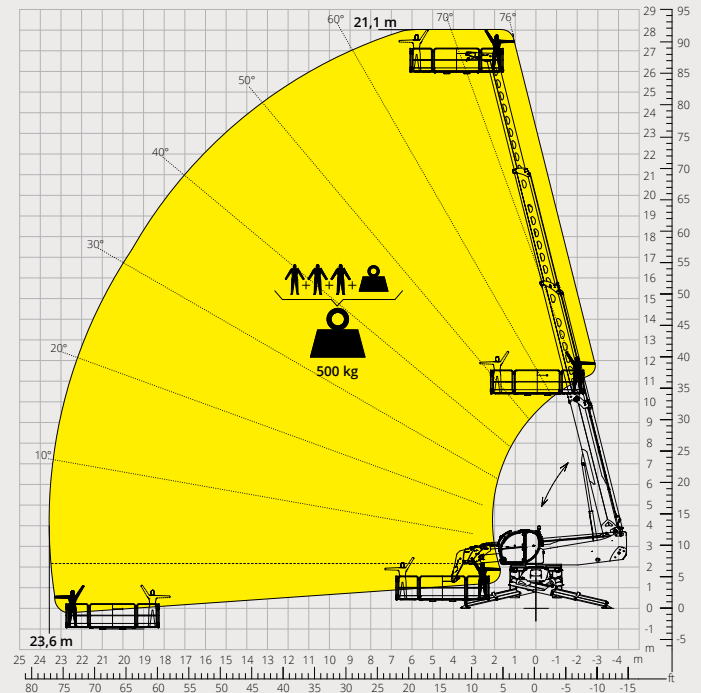
Load chart with  
**HOOK, 13,000 kg**  
ATT - 05 - 013



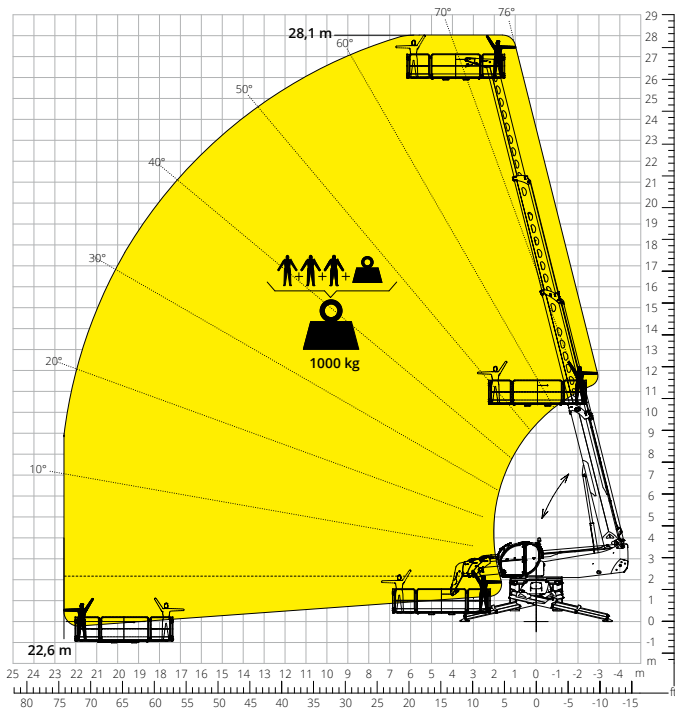
Load chart with  
**WINCH, 13,000 kg**  
ATT - 02 - 018



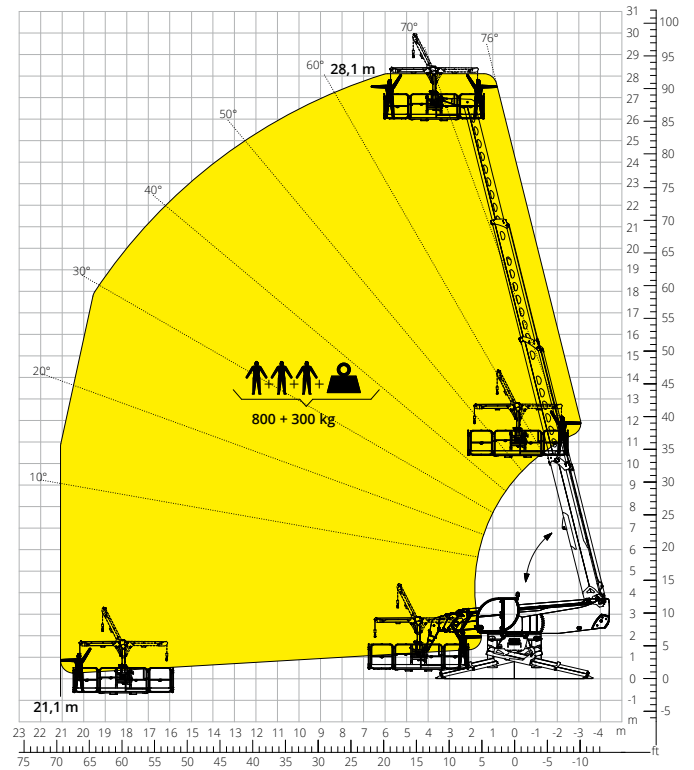
Load chart with  
**ROTATING EXTENDABLE PLATFORM, 500 kg**  
ATT - 01 - 005



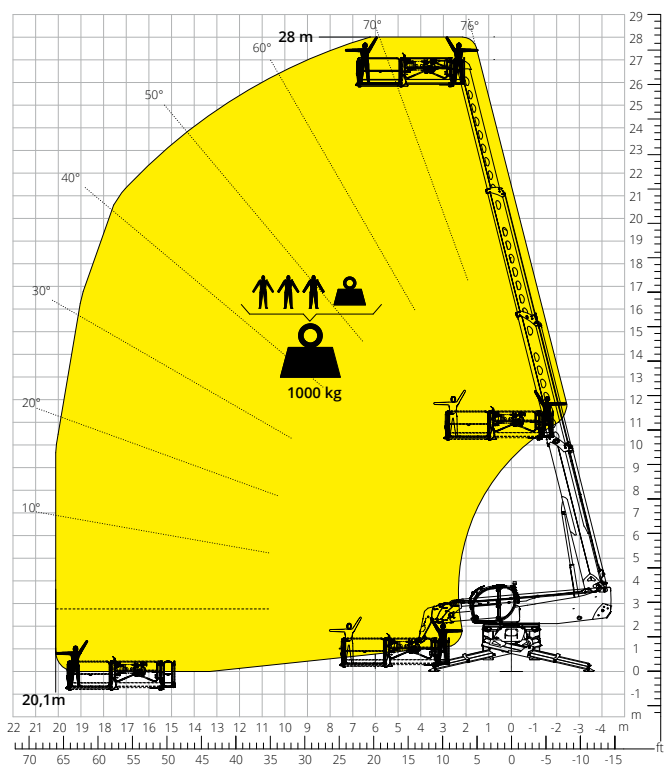
Load chart with  
**ROTATING EXTENDABLE PLATFORM**  
**1,000 kg**  
ATT - 01 - 016



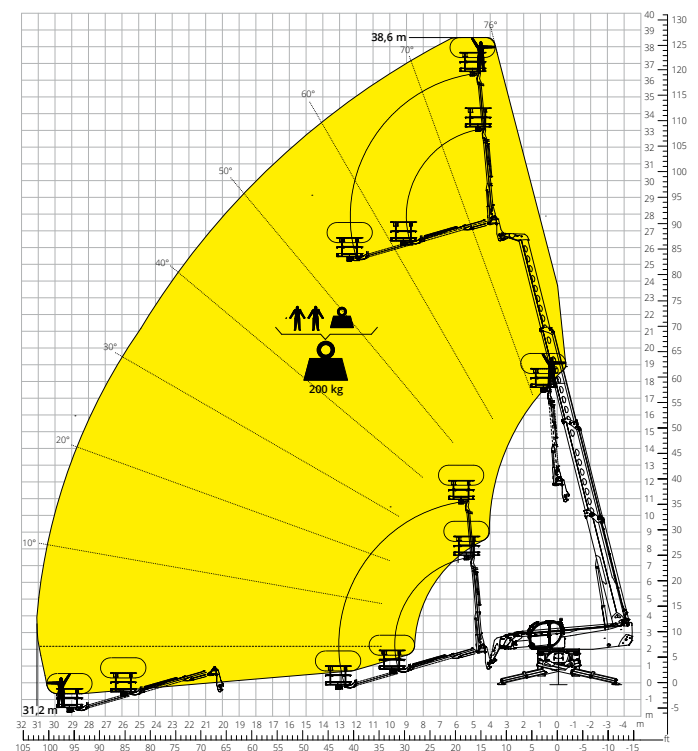
Load chart with  
**PLATFORM 500 kg WITH WINCH 300 kg**  
ATT - 01 - 026



Load chart with  
**EXTENDABLE PLATFORM FOR ROOFS,**  
**1,000 kg**  
ATT - 01 - 020



Load chart with  
**TELESCOPIC PLATFORM, 200 kg - 10 m**  
ATT - 01 - 022



<b>Machine model</b>	Rotating telescopic handler	RTH 13.26	
	Maximum lifting capacity	13,000 kg	
	Maximum lifting height	26.20 m	
	Maximum reach	21.30 m	
	Rotation	360° (continuous)	
<b>Stabilisers</b>	Type	Scissor stabilisers with double telescopic extension (Magni patent)	
<b>Engine</b>	Model	<b>Volvo TAD 582 VE Stage V</b>	<b>Volvo TAD 552 VE Stage IIIA</b>
	Rated power	175 kW (238 hp) at 2,300 rpm	160 kW (218 hp) at 2,200 rpm
	Maximum torque	975 Nm at 1,380 rpm	910 Nm at 1,450 rpm
	Displacement	5 130 cm <sup>3</sup>	
	Cylinders	4 in line	
	Engine type	Turbocharged direct injection diesel	
	Cooling system	Water – intercooler	
<b>Transmission</b>	Type	Hydrostatic	
	Maximum pressure	480 bar	
	Gearbox	Dropbox, 2 speeds forward-reverse	
<b>Axles and brakes</b>	Type	Axles with planetary gearboxes	
	Front axle	Oscillating and steering with levelling, +/-8°	
	Rear axle	Oscillating and steering with hydraulic lock	
	No. of steering wheels	4WS	
	Steering mode	Frontal/Concentric/Crab	
	Service brake	Hydraulically operated wet multi-disk brakes on each axle	
	Parking brake	Hydraulic with negative action	
	Tyre sizes	17.5 R25	
<b>Performance</b>	Max. travel speed	25 km/h	
	Drawbar pull	152 kN	
	Maximum mass towable on hook	5,000 kg	
	Gradeability	50%	
<b>Weights</b>	Turning radius (at forks)	7,240 mm	
	Total unladen*	30,600 kg	
	Front axle unladen (boom retracted and lowered)*	10,600 kg	
	Rear axle unladen (boom retracted and lowered)*	20,000 kg	
<b>Tank and system capacities</b>	Diesel fuel	235 l	235 l
	AdBlue	40 l	-
	Hydraulic fluid	300 l	300 l
	Engine oil	16 l	16 l
	Cooling liquid	40 l	40 l
<b>Hydraulic circuit for movements</b>	Circuit type	Load sensing	
	Service pump	Variable displacement	
	Max. hydraulic flow rate	205 l/min	
	Max. boom head flow rate	100 l/m	
	Max. working pressure	350 bar	
	Distributor for boom and turret movements	SIL 2 electro-proportional valve	
	Movements control	2 two-axis Danfoss joysticks with deadman safety device – Managed via CAN bus technology	
<b>Standards met</b>	2006/42/EC: EU Machinery Directive 2016/1628: EU Regulation on the emissions of stage V engines EN 1459-X: relating to standards on the safety requirements for variable-reach trucks EN 280/EN 280-1/EN 280-2: standards relating to mobile elevating work platforms (if available) ROPS/level 2 FOPS: relating to the standards for protective structures		

*The data given in this brochure are provided for information purposes and are subject to change without prior notice.  
All images are purely guideline and might not give an exact representation of the product.*

*\*the stated weight refers to the vehicle unladen with standard equipment and may vary depending on the chosen configuration.*

## The standard machine configuration includes:

### CAB

- Premium tilting seat with air suspension and headrest
- Adjustable steering column
- Analogue joypad
- Adjustable sunblind
- Heating
- Air conditioning
- FM/AM radio with USB and Bluetooth connectivity
- Ambient LED lights
- USB Type-A and Type-C (5 V) inputs

### REAL TIME INFORMATION

- Touchscreen, 12"
- MCTS – Magni Combi Touch System on-board software
- Automatic RFID tools recognition system
- LMI – Load Moment Indicator
- LLD – Live Load Diagram
- Onboard and remote integrated diagnostics
- Reversing camera with image integrated in the MCTS

### TECHNICAL SPECIFICATIONS

- Q-Fit standard
- Provision for platform
- Advanced three-line CAN BUS system
- Automatic levelling system for outriggers
- Automatic front and rear wheel alignment
- High-precision turret rotation motor by Liebherr
- Automatic parking brake
- Mechanical battery cut-off in engine compartment
- Electrical system: 24 V – IP67

### SERVICE

- MyMagni by Trackunit connectivity system (2 years)
- Warranty: 24 months/2,000 hours