

Ease of Use for Cat® Mini Hydraulic Excavators

for 306 CR, 307.5, 308 CR, 309 CR and 310 Mini Excavators



INDICATE AND E-FENCE ENHANCED PERFORMANCE, PRODUCTIVITY AND EFFICIENCY.

The Cat® Mini Hydraulic Excavator Ease of Use (MHE EOU) features, **Indicate and E-Fence**, are available for 306 CR, 307.5, 308 CR, 309 CR and 310 models including Variable Angle Boom (VAB) models and 308 CR Fixed Boom (Europe and Japan only) and assist operators in controlling the machine to simplify operation, improve accuracy and enhance overall productivity on the job site. Indicate and E-Fence technologies are ideal for digging footings, drainage systems, irrigation, electric utilities and similar applications. MHE EOU is a Caterpillar developed and produced technology system.



Indicate

MHE EOU Indicate provides visual and audible indicators to where the bucket is versus a target grade to cut and fill to exact specifications the first time without overcutting.

Features:

- Entry-level grade system for digging footings, septic systems, residential foundations, slope work and similar applications with level sites.
- Operator selects target depth and slope from the in-cab guidance system, and the monitor provides real-time work-in-progress and distance to grade feedback.
- Does **NOT** include the ability to automatically adjust stick, boom or bucket position. (Cat Grade is required for autos functionality.)



E-Fence

MHE EOU E-Fence automatically constrains machine motion within operator pre-set boundaries for Ceiling, Floor, Wall and Swing to avoid structures overhead, underground, in front or to the left or right of the machine. Ideal for new operators to work within set boundary parameters. Once set, no part of the boom, stick or bucket will pass the defined boundary limit(s).

Features:

- **E-Fence Ceiling** helps operators avoid overhead obstacles such as powerlines, ceilings, tree limbs or similar structures by setting a desired maximum height above the machine.
- **E-Fence Floor** helps operators avoid fiber optic cables, underground utilities or similar underground structures by setting a desired depth below the machine.
- **E-Fence Wall** helps operators avoid structures in front of the excavator by setting a desired maximum reach in front of the machine.
- **E-Fence Swing** helps operators to avoid swinging into structures to the side of the machine such as live traffic, trucks being loaded and other similar obstacles on the jobsite by setting a desired swing boundary to the left or right of the machine.

Swing Assist and Bucket Assist Features

- Swing Assist automatically stops machine swing at set points in truck loading and trenching applications. Simply swing to the desired stopping point and activate using the machine monitor. As you get closer, the machine will automatically decelerate and not allow swing past the set point. Swing Assist helps you hit more repetitive swing targets reducing fuel use and improving cycle times. Also referred to as Return to Trench.
- Bucket Assist maintains last known bucket angle and keeps the cut accurate in sloping, leveling, fine grading and trenching applications using the machine monitor.
- **Swing Assist and Bucket Assist are packaged with MHE EOU Indicate and E-Fence at no additional cost.**



E-Fence Ceiling



E-Fence Wall



E-Fence Floor



E-Fence Swing



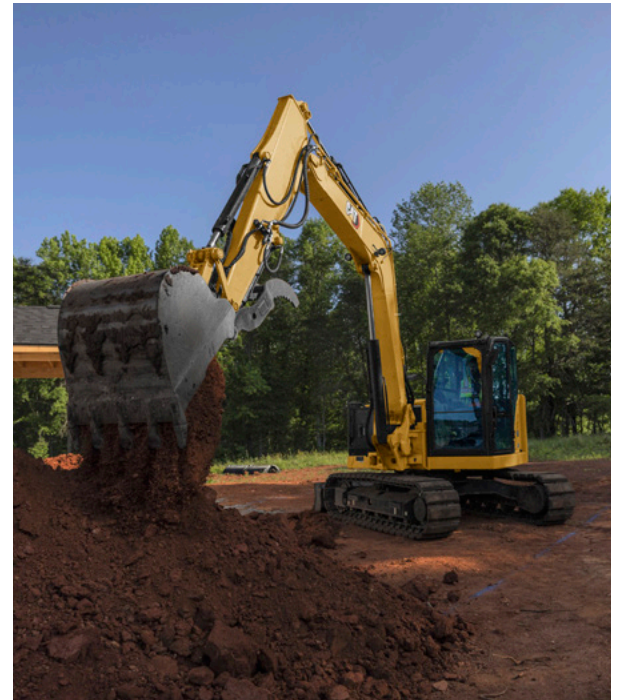
**> SIMPLIFY OPERATION.
IMPROVE ACCURACY.
LOWER COSTS.
ENHANCE SAFETY.**

MHE EOU Indicate and E-Fence assist operators to simplify operation, improve accuracy and enhance safety on the job site – all while saving costs.

- Operated through the machine’s monitor, no second screen required.
- Easy to set up and simple to operate, MHE EOU reduces operator fatigue from overcutting, overswinging and rework.
- Allow operators to work more efficiently and more safely with fewer ground personnel required around the machine work area.
- Allow operators of all skill levels to work faster and with improved accuracy.
- Reaching grade faster with Indicate saves time, manpower and fuel costs contributing to overall savings in costs.
- Minimize job site costs from costly repairs, downtime due to equipment damage and fines from damaging utilities or other structures with E-Fence.

Specifications and Requirements

- MHE EOU is available for Cat 306 CR, 307.5, 308 CR, 309 CR and 310 Next Generation Mini Excavators only. Please note the MHE EOU system is not compatible with canopy configurations, progressive link thumbs, nor does the system account for the extra range of motion that a tilting coupler, tiltrotator or similar attachments allow at this time.
- MHE EOU Indicate and E-Fence may be ordered bundled together or ordered as separate feature packages. Swing Assist and Bucket Assist are packaged with MHE EOU Indicate and E-Fence.
- MHE EOU can be ordered installed from the factory or through your Cat dealer as an upgrade kit.
- Machine must include the monitor, structures, sensors and software to enable MHE EOU. The table below provides the models and serial numbers for machines that can be configured with MHE EOU. Your Cat dealer will work with you to determine what is required based on your machine configuration.



| Model | North America Serial Numbers | Europe, Australia and New Zealand Serial Numbers |
|---------------------|------------------------------|--|
| 306 CR | 6G606350 | 6W600767 |
| 306 CR VAB | NA | 6W601638 (Europe only) |
| 307.5 | GW703902 | GW703902 |
| 308 CR (Swing Boom) | GG806300 | GW803328 |
| 308 CR (Fixed Boom) | NA | GP800234 (Europe only) GX804010 (Japan only) |
| 308 CR VAB | GW804220 | GW804220 |
| 309 CR | GG901307 | GW901319 |
| 309 CR VAB | GW901724 | GW901724 |
| 310 | GWT03675 | GWT03675 |

Contact your Cat dealer to learn more about MHE EOU and the requirements for your mini excavator.

www.cat.com

CAT, CATERPILLAR, LET'S DO THE WORK, their respective logos, "Caterpillar Corporate Yellow," the "Power Edge" and Cat "Modern Hex" trade dress as well as corporate and product identity used herein, are trademarks of Caterpillar and may not be used without permission.

AEXQ3479-02
Replaces AEXQ3479-01
© 2023 Caterpillar
All Rights Reserved

