



**REDUCED
COST**



**SITE
OPERATING
EFFICIENCY**



**ENVIRONMENTAL
CONSIDERATIONS**



**IMPROVE
HEALTH &
SAFETY**



**PRODUCT
QUALITY**

TF-75H ORBITAL HIGH LEVEL FEEDER

SPECIFICATION:

Conveyor Length:	22.5m(73' 10")
Net Engine Power:	
Tier 3/ Stage 3A:	CAT 4.4 4 cylinder diesel engine developing 83kW (111hp) @1800rpm
Tier 4F/ Stage IV:	Caterpillar C4.4 - 4 cylinder diesel engine developing 82kW (110hp) @ 1800rpm
Portability:	Tracked

SPECIFICATION

POWERUNIT:

Tier 3: Stage 3A CAT 4.4 - 4 cylinder diesel engine developing 83kw (111hp) @1800rpm

Tier 4: Tier 4F / Stage IV - Caterpillar C4.4 - 4 cylinder diesel engine developing 82kW (110hp) @ 1800rpm

Fuel tank volume: 325 litres (86 US gallons)

FEED CONVEYOR:

Capacity: 7m³ (9.2yd³)

Feed height: 3.06m (10')

Feed in length without grid: 4.1m (13' 5")

Drive: hydraulic variable speed drive via high torque gearbox

Speed: 0 - 25MPM (83ft / min)

Wearplate Hopper (No Liners)

Rosta scraper at head drum

DISCHARGE CONVEYOR:

Conveyor Length: 22.5m (73' 10")

Belt Width: 1.2m (48")

Conveyor Drive: Variable speed Max 113m/min

Belt Type: EP400 3 Ply 4+2

Optimum working angle: 18°

Optimum discharge height: 8.8m (28' 2")

Stockpile capacity at optimum working angle based on 37° angle of repose: 1047m³ (1369yd³)

Max. working angle: 24°

Max. discharge height: 10.7m (34' 6")

Max. stockpile capacity based on 37° angle of repose: 1957m³ (2560 yd³)

Capacity: Up to 600 TPH

Based on 100mm Lump size at 18° work angle. Max belt speed.

Hydraulic discharge height adjustment

Hydraulic fold over for transport

Rosta scraper at head drum

UNDERCARRIAGE:

Orbital slew ring hydraulic driven

Undercarriage with heavy duty tracks. 4300mm centres, 400mm shoe.

ELECTRICAL

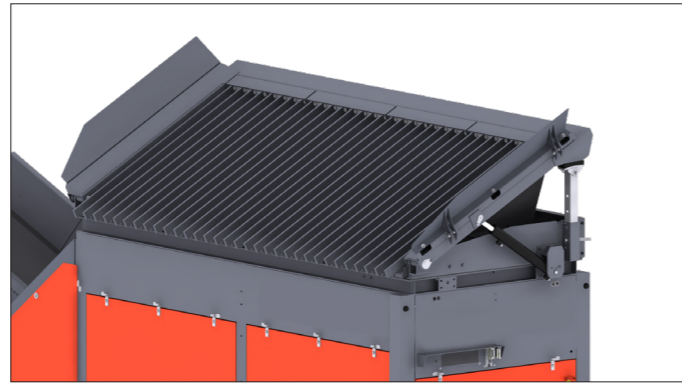
Hand held track control set with connection lead

Emergency stops x 3

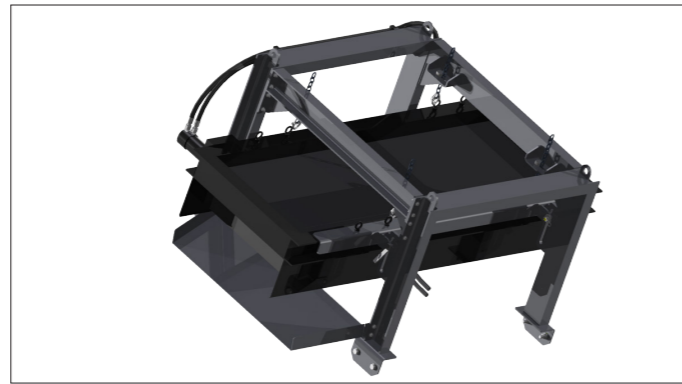
Radio remote for tracking, start/stop feeder, raise/lower incline conveyor and Tipping Grid if fitted



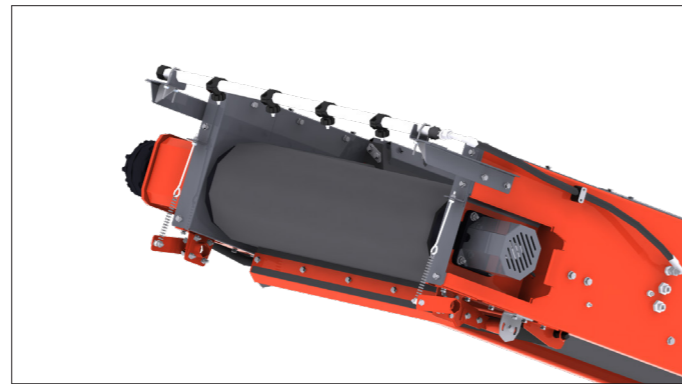
Adjustable Jacking Legs



Tipping Grid



Overband Magnet



Dust Suppression

GENERAL

Pinless deployment

Discharge head drum bearing automatic greasing cartridge

Engine prestart delay & siren

External conveyor belt adjustment

Orange-RAL2002. Special paint colour (if different from above). RAL must be specified on order

PACKAGING

Roll on Roll off transport (RoRo)

OPTIONS

Twin drive feeder

6mm hardened steel wear liners in hopper (configurable at point of order)

14ft Tipping Grid option. 4" Grid Cassette

14ft Tipping Grid option. 6" Grid Cassette

Integrated fall break system bolted into hopper

Hopper upgraded to 500mm (20") extension 9m³ (12yds³) C/W Integrated Fall Break System bolted into Hopper.

Hopper upgraded to 700mm (28") extension 12m³ (15yds³) C/W Integrated Fall Break System bolted into Hopper.

Double Deck Vibrating Grid 4" /100mm Spacing on top deck: (please advise bottom deck mesh Aperture)

Machine prepared hydraulically to tip a standard grid. Includes Remote Control. NO GRID

OPTIONS

TF-75H ORBITAL

Machine prepared hydraulically for DDVG option. Includes Remote Control. NO vibrating grid

Feed Conveyor Drive drum upgraded to Ceramic lagging (twin drive only)

Canvas Dust Covers on Incline boom Conveyor (Retrofittable)

Canvas Dust Covers C/W Dust Hood on Incline Boom Conveyor

Twin Drive on Incline Conveyor (Retrofittable)

Full length Side skirting along main conveyor.

High spec Poly scraper option

Anti roll back flaps x 3.

Incline belt Upgraded to 3ply heavy Duty belt

Conveyor fitted with Chevron belt 3 ply x 4+2 covers

Incline Conveyor Drive drum upgraded to Ceramic lagging

Discharge Conveyor Underguard option Length of Mid section.

Dust Suppression at Discharge Conveyor head drum

Beltweigher Option

Overband magnet at feedboot of incline conveyor

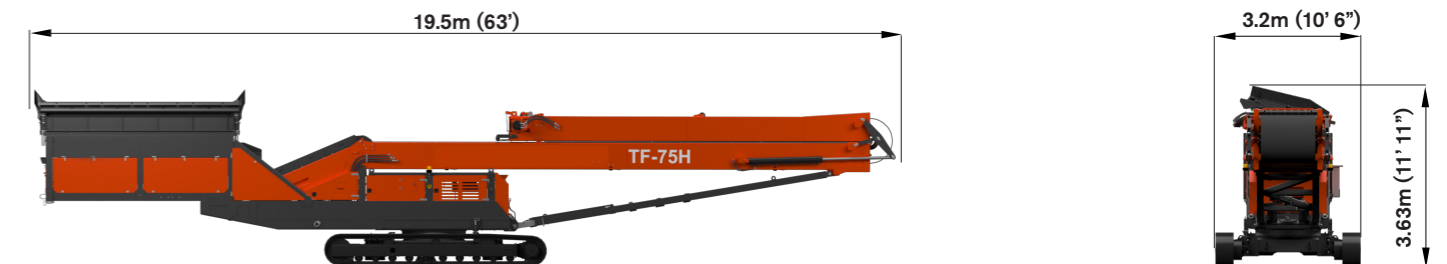
Powerunit c/w Hydraulic oil, ISO 68 - (Recommended for ambient temperatures between +15 to +50°C)

Pull Cord E-stop running length of Incline Conveyor both sides

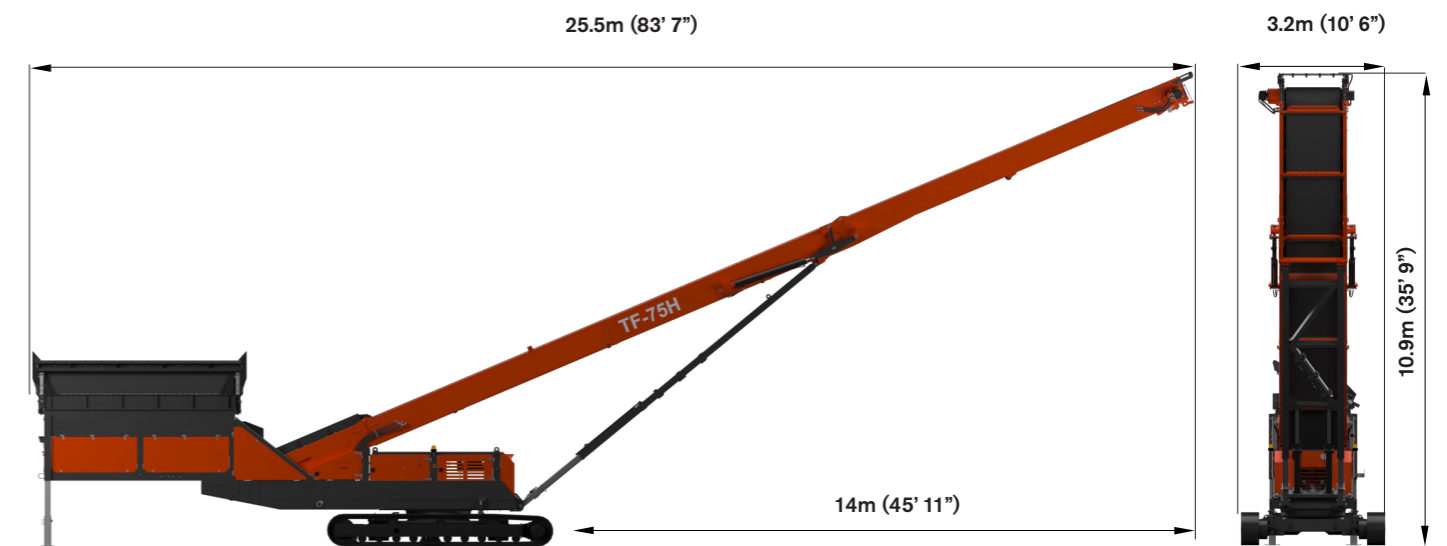
Telemetry System c/w 3 years data subscription (Belt Weigher Option recommended)(Unavailable for Tier 3)

Special paint colour (if different from above). RAL must be specified on order

TRANSPORT DIMENSIONS



WORKING DIMENSIONS



MACHINE WEIGHT: 29,300kg (64,595lbs)

TF-75H ORBITAL

FEED CONVEYOR

- ▶ Capacity: 7m³ (9.2yd³)
- ▶ Feed height: 3.06m (10')
- ▶ Feed length without grid: 4.1m (13' 5")

DISCHARGE CONVEYOR:

- ▶ Conveyor length: 22.5m (73' 10")
- ▶ Belt width: 1.2m (48")
- ▶ Optimum working angle: 18°
- ▶ Optimum discharge height: 8.8m (28' 2")
- ▶ Stockpile capacity at optimum working angle. Based on 37° angle of repose: 1047m³ (1369yd³)
- ▶ Max. working angle: 24°
- ▶ Max. discharge height: 10.7m (34' 6")
- ▶ Max. stockpile capacity based on 37° angle of repose: 1957m³ (2560 yd³)
- ▶ Capacity: up to 600 tph. Based on 100mm Lump size at 18° work angle. Max belt speed.



POWERUNIT:

- ▶ Tier 3:
Stage 3A CAT 4.4
- 4 cylinder diesel engine developing 83kw (111hp) @1800rpm
- ▶ Tier 4:
Tier 4F / Stage IV - Caterpillar C4.4
- 4 cylinder diesel engine developing 82kW (110 Hp) @ 1800 RPM

UNDERCARRIAGE:

- ▶ Orbital slew ring hydraulic driven
- ▶ Undercarriage with heavy duty tracks. 4300mm centres, 400mm shoe