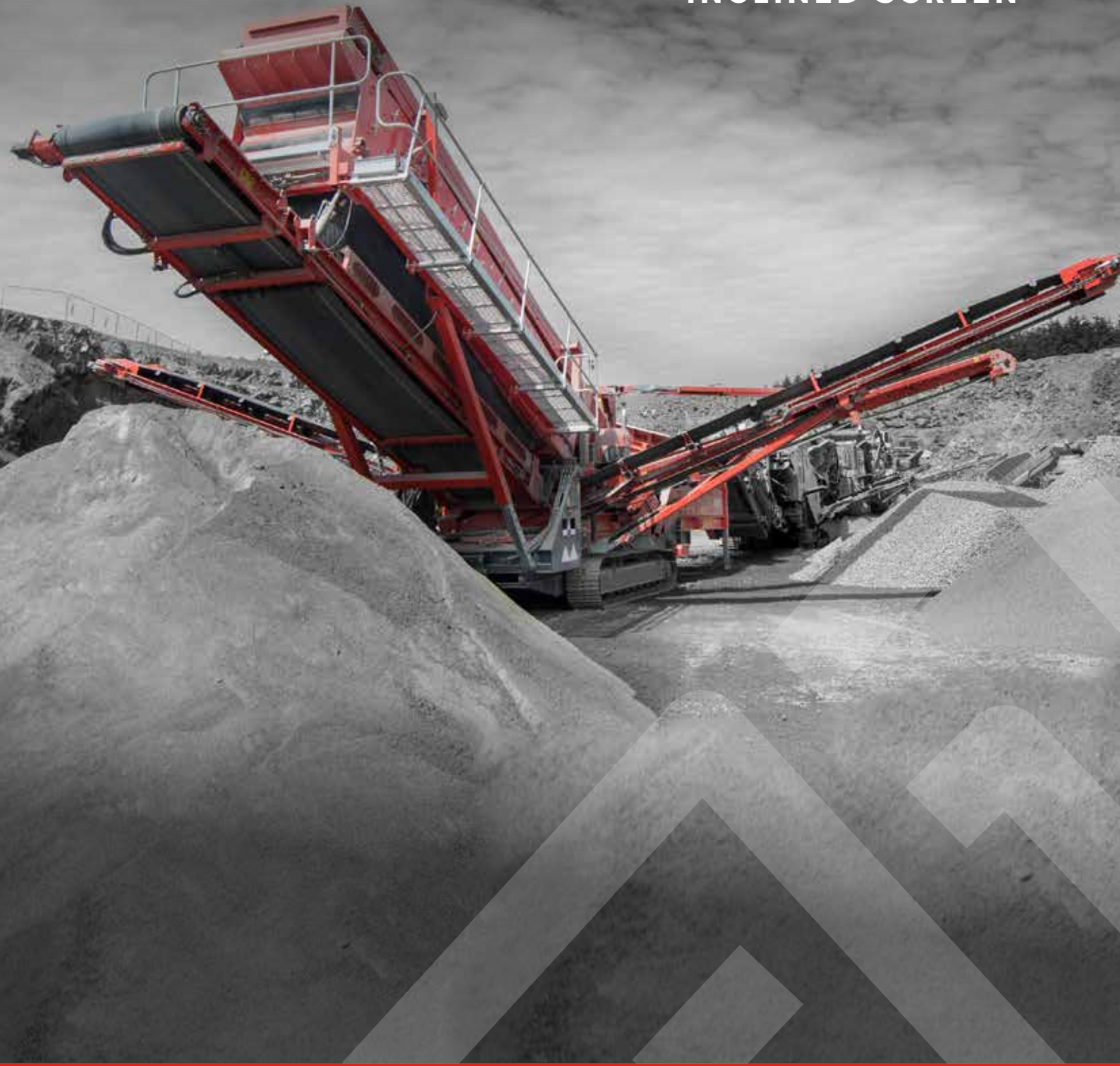




694+

INCLINED SCREEN



STRONG **HERITAGE**, STRONG **FUTURE**



# 694+

## INCLINED SCREEN



The Finlay® 694+ Hybrid Inclined Screen offers operators the flexibility to power the plant either by an electrical connection or diesel/hydraulic configuration. The plant features a triple deck screen configuration providing three full sized 6.1m x 1.53m (20' x 5') screens.

An innovative hydraulically folded fourth (oversize plus) conveyor allows simple adjustment with variable tilt and slew discharge, between 18 degree and 30 degree, for recirculating in a closed circuit with a crusher or stockpiling of finished material.

### FEATURES:

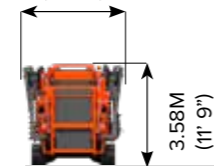
- > The plant's electrically driven power system provide significant cost advantages and efficiencies.
- > Superior performance in dusty applications and in high altitude environments.
- > The triple deck 6.1m x 1.525m (20' x 5') screen box with full catwalk access is the largest and most accessible in it's class.
- > Maximum utilisation of three 6.1m x 1.525m (20' x 5') decks provide ultra-efficient screening capacities even at small aggregate sizes.
- > Screen box angle can be hydraulically adjusted to an angle between 18° - 30°.
- > T-Link telematics hardware and software along with free seven year data subscription are fitted and installed as standard.

### TRANSPORT DIMENSIONS

19.36M (63' 6")



3M (9' 10")



3.58M (11' 9")

### WORKING DIMENSION

19.6M (64' 4")



17.9M (58' 8")



7.0M (23' 1")

**MACHINE WEIGHT:** 40,000KG (88,184LBS)  
(WITH TIPPING GRID)

### 1 HOPPER/FEDDER

Hopper Capacity: 8m<sup>3</sup> (10.5yd<sup>3</sup>)  
Feed height: 2.5m (8' 2") - no grid  
Feed in width: 4.2m (13' 9")  
Beltfeeder belt width: 1.2m (48")

### 2 MAIN CONVEYOR

Belt width: 1.2m (48")  
Hydraulic discharge height adjustment  
Belt Speed: 92 mpm (3 02' per min)  
Steel skirted full length of conveyor

### 3 OVERSIZE / MIDGRADE CONVEYORS

Belt width: 8 00mm (32")  
Working Angle: 24°  
Hydraulic Folding  
Discharge Height: 4.71m (15' 5")  
Stockpile capacity: 193m<sup>3</sup> (252yd<sup>3</sup>)



### T-LINK TELEMATICS

T-Link telematics hardware and software along with free seven year data subscription are fitted and installed as standard.

### 4 UNDERCARRIAGE

Shoe Width: 500mm (20")  
Speed: 0.8 km/h  
Gradeability: 32.6°  
Raking Angle: 9°

### 5 SCREENBOX

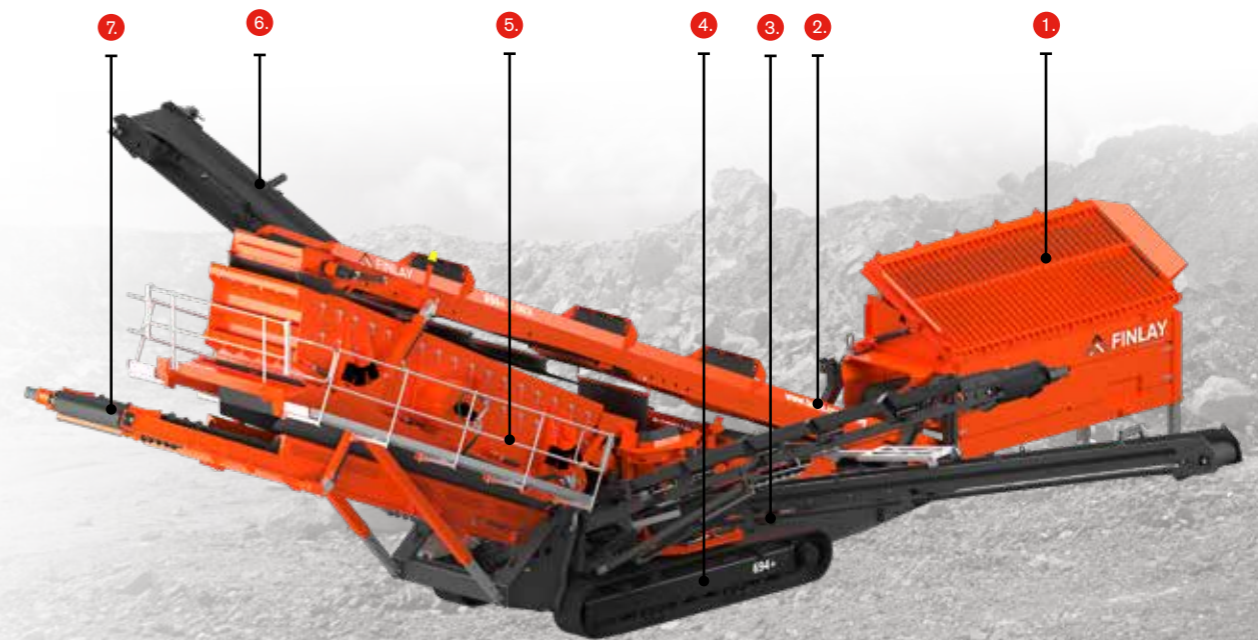
All decks: 6.1m x 1.53m (20' x 5')  
Screen Angle: 18° - 3 0°, hydraulic adjust  
Galvanised access catwalks on both sides and top end of screen  
Total screening area: 27.8m<sup>2</sup> (300ft<sup>2</sup>)

### 6 OVERSIZE CONVEYOR

Belt width: 500mm (20")  
Working Angle: Variable 22° (Max)  
Discharge Height: Variable 4.8m (Max)  
Stockpile capacity: 16 4.5m<sup>3</sup> (215.2yd<sup>3</sup>) @ 40°

### 7 FINES CONVEYOR

Belt width: 1.2m (4 8")  
Working Angle: Variable 25° (Max)  
Standard Discharge Height: 5.2m (17' 1")  
Stockpile capacity: 260m<sup>3</sup> (340yd<sup>3</sup>)





The material in this document is for information only and is subject to change without notice.

Finlay® assumes no liability resulting from errors or omissions in this document, or from the use of the information contained herein.

Due to continual product development we reserve the right to change specifications without notice. Product performance figures given in this brochure are for guidance purposes only, this information does not constitute an expressed or implied warranty or guarantee, but shows test examples. These results will vary depending on application. Photographs are for illustrative purposes only; some or all of the machines in the illustrations may be fitted with optional extras. Please check with your Dealer for details on optional extras.

Published and Printed in 2022

[www.terex.com/finlay](http://www.terex.com/finlay)

E: [sales@terexfinlay.com](mailto:sales@terexfinlay.com)

T: +44 28 82 418 700

